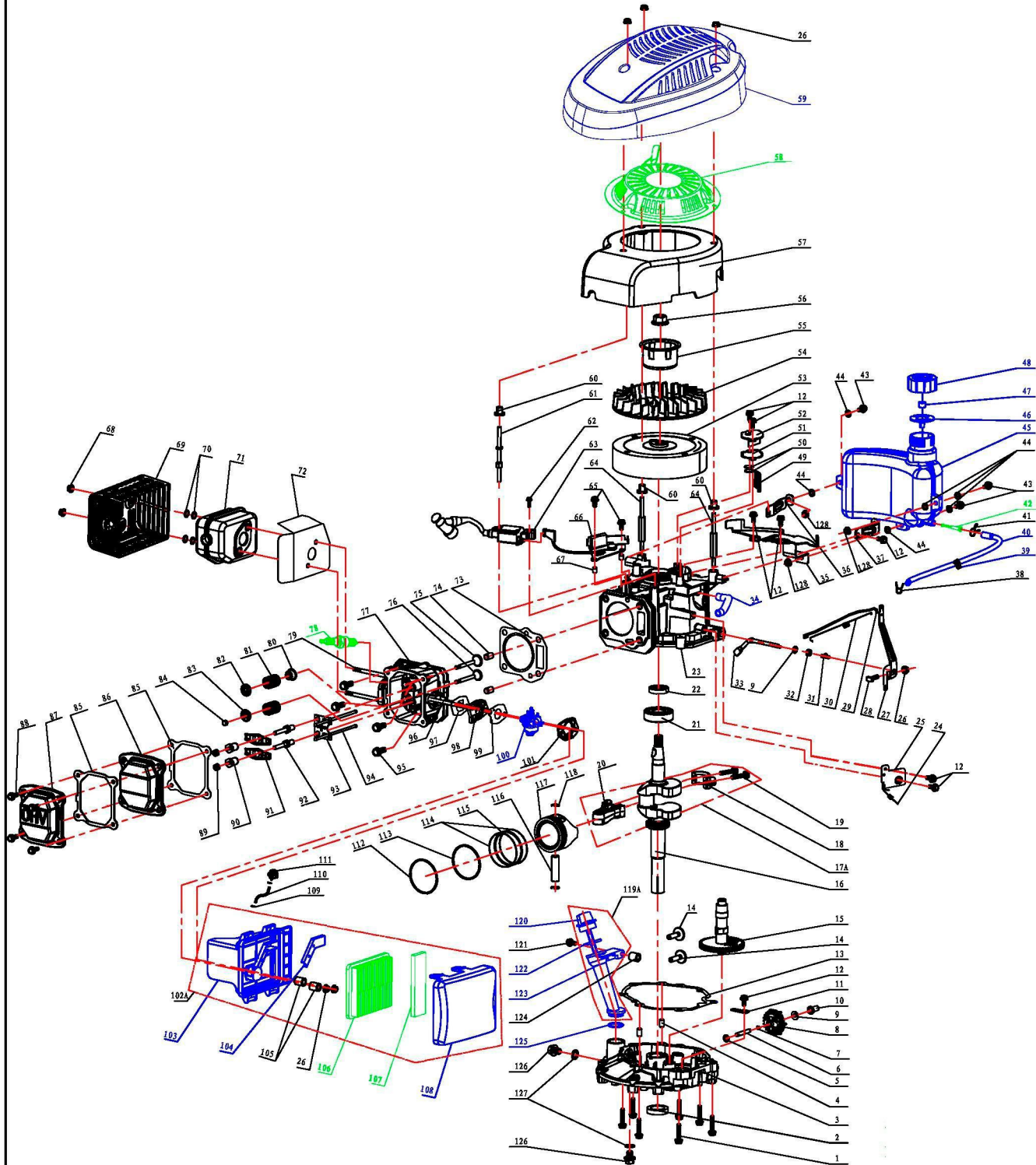


Part No.	Material code	Drawing code	Description in English	Material	QTY
1	G1R2-0000-130	D-002-207-00	Foam Pipe	NBR/PVC	1
2	G2M3-0000-130	M-005-005-00	Brake Handle	Q235	1
3	G2M2-0000-000	M-005-006-00	Brake Fastener	Q235	1
4	11016W	GB/T5789-1986	Hex Bolt	M6x35/8.8级	1
5	G2M2-0100-000	M-005-004-00	Upper Handrail	Q235(t=φ 22x1.5)	1
6	G2M3-0100-000	M-005-002-00	Brake Cable		1
7	12003W	GB/T6182-2000	II Type Hex Locknut	M6/8.8级	2
8	G1M2-0800-000	D-002-215-00	Rope Guide	Q235	1
9	11022W	GB/T14-1998	Carriage Bolt M8X50	M8x50/8.8级	2
10	12004W	GB6170-2000	I Type Hex Nut M6	M8/8.8级	4
11	G1P2-0100-130	D-002-212-00	Knob	PA6	4
12	15003W	GB/T97.1	Flat Washer	φ 8.4X φ 16X1.6	4
13	G2M2-0200-000	M-005-003-00	Lower Handrail	Q235(t=φ 22x1.5)	1
14	G1P2-0200-000	D-002-214-00	Fastener	ABS	1
15	12005W	GB/T6182-2000	II Type Hex Locknut	M8/8.8级	6
16	11015W	GB/T5783-2000	Hex Bolt	M8x16/8.8级	6
17	G2M1-0000-000	M-004-002-00	Right Bracket	Q235	1
18	G2M1-0100-000	M-004-003-00	Left Bracket	Q235	1
19	11021W	GB/T14-1998	Carriage Bolt	M8x30/8.8级	2
20	G2R1-0000-000	M-001-003-01	Rubber sheet	NBR	1
21	11020W	GB/T5783-2000	Hex Bolt	M4x10/8.8级	3
22	15006W	GB/T96.2-2002	Flat Washer	φ 4.5X φ 12X1	3
23	12006W	GB/T6182-2000	II Type Hex Locknut	M4/8.8级	3
24	G2M6-0200-000	M-003-500-60	Right Height Adjustor Assy		2
25	G2M6-0300-000	M-003-500-70	Left Height Adjustor Assy		2
26	G1P70300230	D-002-700-00	A type 7" Wheel (wheel hub and tyre)	灰色	4
27	G4P70000000	D2-3D-201-000	Nylon Bush	PA6	8
28	G1P7-0500-000	D-002-804-00	Outside Cover For Wheel Hub	PP	4
29	G2M1-0200-000	M-004-001-00	Bracket Press Board	Q235(t=1.5)	2
30	11017W	GB/T5789-1986	Hex Flange Face Bolt	M8x25/8.8级	3
31	11018W	GB/T5789-1986	Hex Flange Face Bolt	M5X10/8.8级	2
32	12008W	GB/T6182-2000	II Type Hex Locknut	M5/8.8级	2
33	G2M5-0300-000	M-002-404-00	Blade Adapter	Q235	1
34	G2M5-0500-000	M-003-001-02	20" Blade (Three Holes)	40B	1
35	G1M5-0300-000	D-002-405-00	Big Washer	65Mn	1
36	G2M5-0200-000	M-003-004-00	Hex Flange Face Bolt	3/8-24UNF-2Bx35	1
37	G2M1-0300-130	M-001-001-01	20" Deck	ST12(t=1.5)	1
38	V100-0001-000	V1-00-000-001	T475 Engine	浓 I ,定速,刹车,MS	1
39	15004W	GB/T848-2002	washer	φ 13x φ 20x1.5	4
40	G2M1-0800-130	M-001-006-00	Bracket for side discharge	Q235(T=2)	1
41	G2M1-0500-000	M-001-003-00	Mulch Shaft	Q235	1
42	G2M1-0600-000	M-001-004-00	Mulch Spring	碳素弹簧钢	1
43	G2P1-0100-000	M-001-005-00	Mulch cover	PP	1
44	G2P1-0200-000	M-001-002-01	deflector cover	PP	1
45	1B002W	GB/T91-2000	split pin	φ 2x20	4
46	G2M5-0600-000	M-002-403-00	Bush for Blade Adapter	Q235	1
47	G2M5-0400-000	M-002-402-00	Long Key	45#	1

T475-3



1
2
3
4
5
6
7
8
9
10
11
12
13
14
15
16
17A
18
19
20
21
22
23
24
25
26
27
28
29
30
31
32
33
34
35
36
37
38
39
40
41
42
43
44
45
46
47
48
49
50
51
52
53
54
55
56
57
58
59
60
61
62
63
64
65
66
67
68
69
70
71
72
73
74
75
76
77
78
79
80
81
82
83
84
85
86
87
88
89
90
91
92
93
94
95
96
97
98
99
100
101
102A
103
104
105
106
107
108
109
110
111
112
113
114
115
116
117
118
119A
120
121
122
123
124
125
126

T475-3-- Parts List

Part No.	Code	Description in English	Qty (PCS)
1	GB5789	Bolt M6x30	7
2	P-65-01-02-100-00	Oil Seal 25x38x7	1
3	P-65-01-02-010-00	Crankcase Cover	1
4	P-65-01-01-020-00	Dowel Pin 8x14	2
5	P-65-01-01-170-00	O Ring 6.5x12x1	2
6	P-65-01-02-050-00	Gear Shaft of speed limit	1
7	P-65-01-02-090-00	Circlip of Gear Shaft	1
8	P-65-01-02-030-00	Gear Shaft Assy	1
9	P-65-01-01-100-00	O Ring 6.5x15x0.5	1
10	P-65-01-02-020-00	Sliding Sleeve	1
11	P-65-01-02-060-00	Gear Shaft Hold-down Plate	1
12	GB5789	Bolt M6x12	8
13	P-65-01-01-010-00	Seal Gasket of Crankcase	1
14	P-65-08-03-00-00	Pin	2
15	P-65-08-01-000-00	Camshaft Assy	1
16	P-65-01-03-010-00	Crankshaft Assy	1
17A	P-65-01-04-020-00	Connecting Rod Assy	1
18	P-65-01-04-022-00	Connecting Rod Cap	1
19	P-65-01-04-023-00	Connecting Rod Bolt	2
20	P-65-01-04-021-00	Connecting Rod	1
21	GB276	Ball Bearing 6205	1
22	P-65-01-01-090-00	Oil Seal 22x35x7	1
23	P-65-01-01-030-00	Crankcase Assy	1
24	P-65-01-06-060-04	Speed Regulator Pull Spring	1
25	P-70B-01-06-000-00	Speed Regulator	1
26	GB6177.1-2000	Nut M6	6
27	P-65-01-06-030-03	Speed Regulator Rocker	1
28	P-65-01-06-040-00	"T" type Bolt	1
29	P-65-01-06-033-01	Handspike of Valve	1
30	P-65-01-06-010-00	Spring of Valve	1
31	P-65-01-01-060-00	Springness Split Pin	1
32	P-65-01-01-120-00	Oil Seal 6x11x4	1
33	P-65-01-01-050-00	Speed Regulator Rocker Spindle	1
34	P-65-05-06-000-00	Waste Pipe	1
35	P-65-05-02-000-00	Main Bracket of Fuel Tank	1
36	P-65-05-01-040-00	Right Bracket of Fuel Tank	1
37	P-65-05-01-050-00	Left Bracket of Fuel Tank	1
38	P-65-05-07-000-00	Oil Pipe Circlip II	1
39	P-65-05-08-000-00	Oil Pipe Retaining Clip	1
40	P-65-05-09-000-00	Oil Pipe	1
41	P-65-05-06-000-00	Oil Pipe Circlip I	1
42	P-65-05-05-000-00	Filtering Net Duct of Fuel	1
43	GB5789	Bolt M6x22	3

44	P-65-05-10-000-20	Cushion Blocking	6
45	P-65-05-01-030-00	Fuel Tank	1
46	P-65-05-01-020-00	Seal Gasket of Fuel Tank Cap	1
47	P-65-05-01-060-00	Sponge of Fuel Tank Cap	1
48	P-65-05-01-010-00	Fuel Tank Cap	1
49	P-65-01-01-040-00	Lubricate Filtering Net	1
50	P-65-01-01-080-00	Valve Element of Respirator Cover	2
51	P-65-01-01-090-00	Gasket of Respirator Cover	1
52	P-65-01-01-070-00	Respirator Cover Plate Assy	1
53	P-65-07-03-010-00	Flywheel Assy	1
54	P-65-07-04-020-00	Fan	1
55	P-65-07-02-000-00	Start-up Hub	1
56	GB6177.2-2000	Nut M14x1.5	1
57	P-65-07-04-010-00	Blower Housing	1
58	P-65-07-01-000-00	Recoil Start Assy	1
59	P-65-07-06-010-00	Engine Cover	1
60	P-65-07-04-030-00	Blower Housing Bush	3
61	P-65-01-06-081-00	Abnormity Two Stud Bolt I	1
62	GB5789	Bolt M6x25	1
63	P-65-07-03-020-00	Ignition Assy	1
64	P-65-07-05-020-00	Abnormity Two Stud Bolt II	2
65	GB5789	Bolt M6x20	2
66	P-65-01-03-010-01	Detent Assy	1
67	P-65-01-07-010-00	Detent Bush	2
68	GB6187.1-2000	Nut M6	2
69	P-65-06-03-000-00	Muffler Cover Assy	1
70	P-65-06-04-000-00	Heat Insulation Gasket	4
71	P-65-06-00-000-00	Muffler Assy	1
72	P-65-06-02-000-00	Heat Insulation Gasket of Muffler	1
73	P-65-02-04-000-00	Gasket of Cylinder Head	1
74	P-65-02-05-000-00	Locating Pin of Cylinder Head	2
75	P-65-08-06-000-00	Intake Valve	1
76	P-65-08-07-000-00	Exhaust Valve	1
77	P-65-02-01-000-00	Cylinder Head Assy	1
78	P-65-07-03-030-00	Spark Plug	1
79	GB900	Two Stud Bolt M6x92	2
80	P-65-02-06-000-00	Oil Seal Assembled of Valve	1
81	P-65-08-08-000-00	Spring of Valve	2
82	P-65-08-09-000-00	Spring Coil of Intake Valve	1
83	P-65-08-10-000-00	Spring Coil of Exhaust Valve	1
84	P-65-08-11-000-00	Top Cover of Exhaust Valve	1
85	P-65-02-03-000-00	Gasket of Cylinder Head Cover	2
86	P-65-02-01-000-01	Cylinder Head Cover I	1
87	P-65-02-01-000-00	Cylinder Head Cover II	1
88	GB5789	Bolt M6x14	4
89	P-65-08-02-040-00	Combined Nut	2
90	P-65-08-02-030-00	Adjust Nut of Valve	2

91	P-65-08-02-000-00	Rocker of Valve	2
92	P-65-08-02-020-00	Rocker Support Bolt of Valve	2
93	P-65-08-05-000-00	Guide Board of Handspike	1
94	P-65-08-04-000-00	Handspike	2
95	GB5787	Bolt M8x45	4
96	GB900	Two Stud Bolt M6x95	2
97	P-65-03-02-000-00	Paper Gasket I of Carburetor	1
98	P-65-03-04-000-00	Air Inlet Pipe	1
99	P-65-03-03-000-00	Paper Gasket II of Carburetor	1
100	P-65-03-01-000-02	Carburetor Assy	1
101	P-65-03-05-000-00	Steel Gasket	1
102A	P-65-04-00-000-00	Air Filter Assembled	1
103	P-65-04-01-020-01	Air Filter Pedestal	1
104	P-65-04-01-030-00	Exhaust Gas Cover Board	1
105	P-65-04-01-070-00	Air Filter Bush	2
106	P-65-04-01-040-00	Paper Filter Element	1
107	P-65-04-01-060-00	Sponge Filter Element	1
108	P-65-04-01-010-00	Air Filter Upper Cover	1
109	P-65-05-10-030-00	Air Pipe Circlip of Prime Button	2
110	P-65-05-10-040-00	Air Pipe of Prime Button	1
111	P-65-05-10-000-00	Prime Button	1
112	P-65-01-04-012-00	Piston Ring I	1
113	P-65-01-04-013-00	Piston Ring II	1
114	P-65-01-04-015-00	Guide Rail	2
115	P-65-01-04-014-00	Bushing Ring	1
116	P-65-01-04-016-00	Piston Pin	1
117	P-65-01-04-011-00	Piston	1
118	P-65-01-04-017-00	Circlip of Piston Pin	2
119	P-65-01-05-000-00	Lubricating Setting	1
120A	P-65-01-05-010-00	Lubricating Gauge	1
123	P-65-01-05-020-00	Lubricating Pipe	1
121	GB5789	Bolt M6x50	1
122	GB3452	"O" Ring 25x3.1	1
124	P-65-01-05-030-00	Distance Sleeve of Lubricating Setting	1
125	GB3452	"O" Ring 21x2.3	1
126	GB5787	Draining Oil BoltM10x1.25x12	2
127	P-65-01-02-070-00	Draining Oil Bolt Gasket	2
128	GB6182	Type II LockNut M6	3